



ORDER CAN BE SET UP

STORAGE SOLUTIONS SQUARED



Order is a profession, which is laid in our cradle. We tidy up, store and sort - we set up order - with all possibilities and matters.

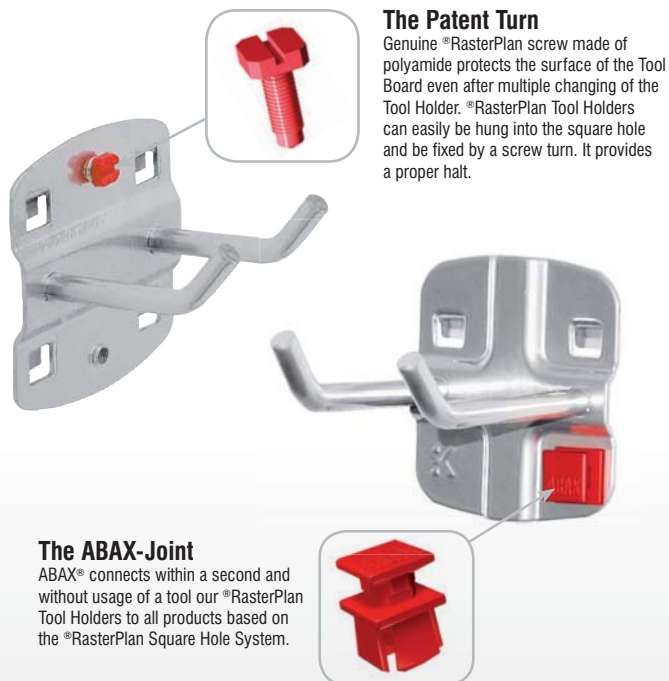
Order generates space, brings an overview and saves time.

This knowledge has become a profession, and now we invent and improve these professional storage systems for industrial purposes over the last four decades.

Off the Tool Boards for organizing tools, through the plastic bin to store materials and small parts, up to our high quality cabinet systems for the safe storage of heavier machine parts.

Everything has its place and is designed for immediate usage.

Order can be set up



One of our principle of success is our high quality standard claim towards ourselves combined with the love on the detail. Due to continuous innovations and sustainable investments in the production site of Germany, all our products provide quality, variability and functionality.

It is not the size of a company which provides the quality statement furthermore it is the quality which makes the size. Continuous quality controls are an important part of our companies philosophy. Chosen products also wear the seal "GS-Zeichen" for proven Quality.



Quality in Detail





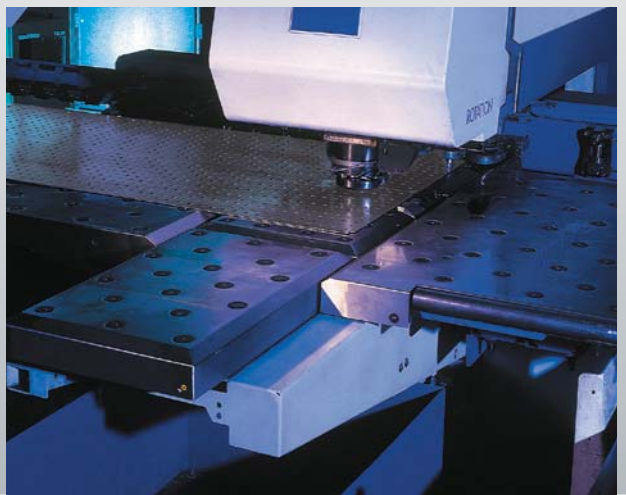
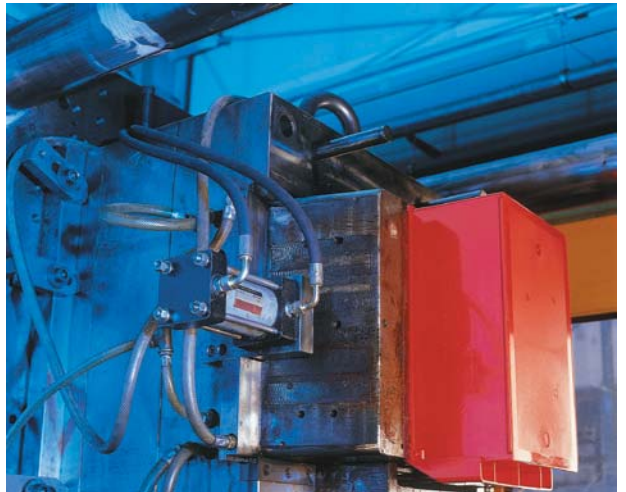
Our Product Lines

...help people to organize. Organize themselves and at the end make the working processes in daily usage more simple and efficient. To almost all internal organization problem we want to provide you a solution. This is our Claim.

Our Company

...Is big enough to guarantee quick delivery times by a steady high quality standard, and on the other hand small enough to be flexible and trying to succeed even in individual desires and demands of our customers and business partners. We are successful together because the demands of the people inspire us for new inventions.

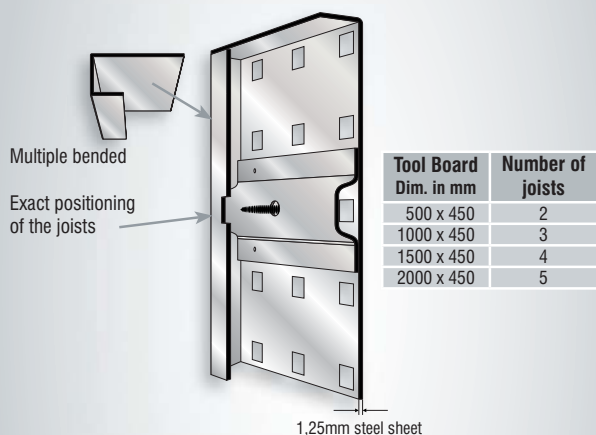
In the center is the human



The Systematic way to set up order by using RasterPlan Tool Boards. Universal usage by high flexibility - Off the single Tool Board at the wall, by the application as dividing units through the use at trolleys and standing units or even in Tool Cabinets and Pull-Out Cabinets.

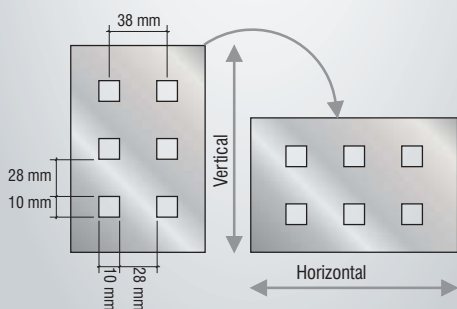
Details

- Easy neatly arranged tool storage
- Quick access
- Systematic order by color
- Impact and scratch resistant plastic coating
- Special constructed Joist
- Sheet steel board 1,25 mm thick
- Covered holes for wall mounting
- 14 brilliant ordinal colors
- 4 sizes - 8 flexible application possibilities
- Compatible with RasterPlan Louved Boards



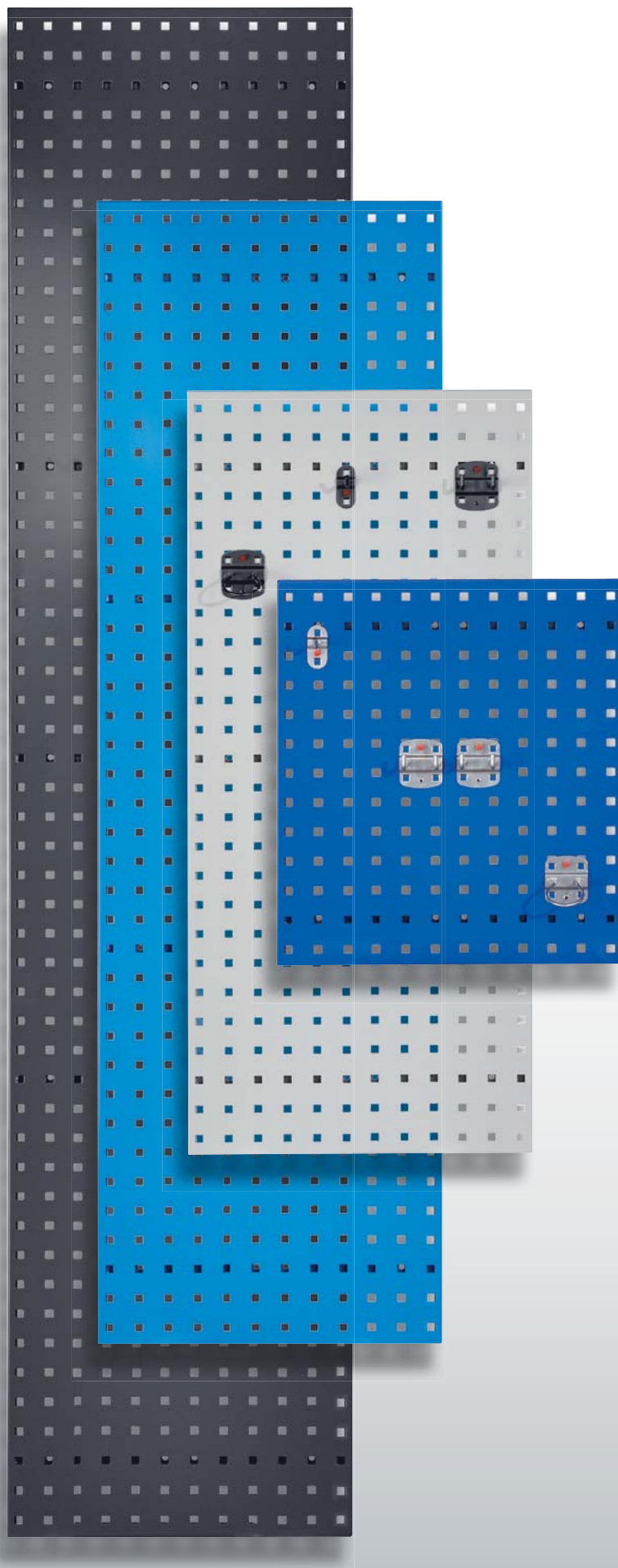
Construction of the backside

®RasterPlan Tool Boards are stiffened by special designed joists, both sides welded on for highest load.

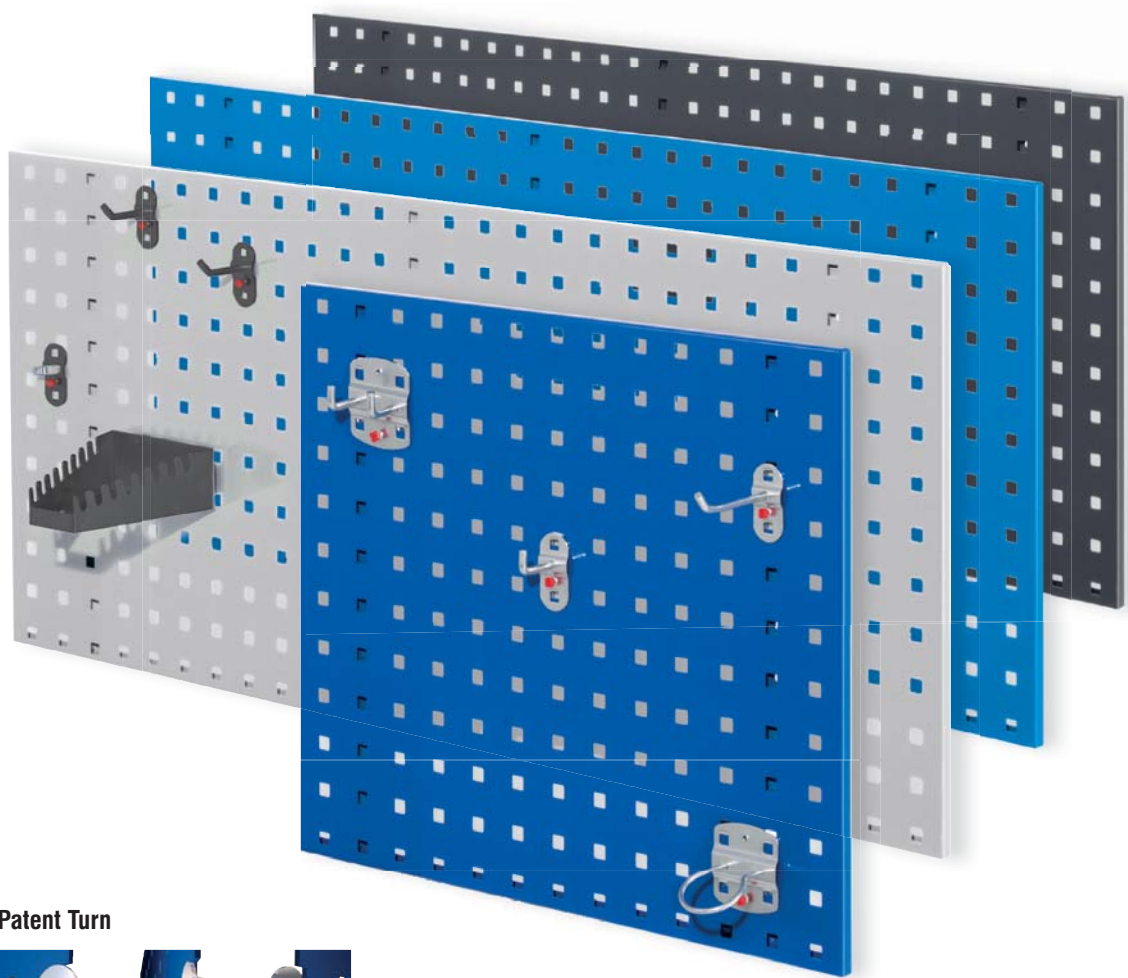


Flexibility

Genuine ®RasterPlan Tool Boards can be used vertical and horizontal.



Workbench Brackets	
for 1 board	4470.00.0401
for 2 boards above	4470.00.0501
(are required in pairs)	



The Patent Turn



®RasterPlan Tool Holders can easily be hung into the square holes and be fixed by a simple turn of the screw. This provides a safe compound.



®RasterPlan



Dim. in mm	RAL 9010 pure white	RAL 7035 light grey	aluminium	RAL 7015 slate grey	RAL 7016 anthracite	RAL 9005 jet black	RAL 6011 reseda green
500 x 450	4001.00.0517	4001.00.0513	4001.00.0501	4001.00.0519	4001.00.0508	4001.00.0515	4001.00.0512
1000 x 450	4001.00.1017	4001.00.1013	4001.00.1001	4001.00.1019	4001.00.1008	4001.00.1015	4001.00.1012
1500 x 450	4001.00.1517	4001.00.1513	4001.00.1501	4001.00.1519	4001.00.1508	4001.00.1515	4001.00.1512
2000 x 450	4001.00.2017	4001.00.2013	4001.00.2001	4001.00.2019	4001.00.2008	4001.00.2015	4001.00.2012



Dim. in mm	RAL 5012 light blue	RAL 5015 sky blue	RAL 5010 gentian blue	RAL 1023 traffic yellow	RAL 1006 maize yellow	RAL 2009 traffic orange	RAL 3020 traffic red
500 x 450	4001.00.0518	4001.00.0510	4001.00.0521	4001.00.0511	4001.00.0506	4001.00.0507	4001.00.0514
1000 x 450	4001.00.1018	4001.00.1010	4001.00.1021	4001.00.1011	4001.00.1006	4001.00.1007	4001.00.1014
1500 x 450	4001.00.1518	4001.00.1510	4001.00.1521	4001.00.1511	4001.00.1506	4001.00.1507	4001.00.1514
2000 x 450	4001.00.2018	4001.00.2010	4001.00.2021	4001.00.2011	4001.00.2006	4001.00.2007	4001.00.2014

Tool storage

Cabinet systems

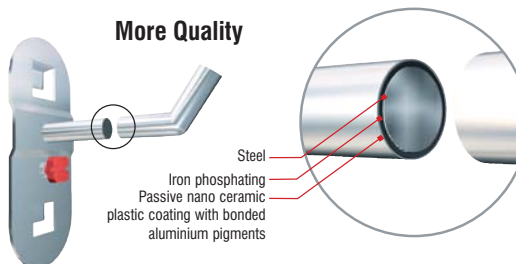
Storage of small parts

Ergonomics

®RasterPlan Tool Holders provide an overview and order. The RasterPlan System has for almost every tool its own Tool Holder. Solid constructed for a long term industrial usage.

Details

- Impact and scratch resistant plastic coating
- Stamped base plate 1,5 mm strong
- 2 standard colors to provide systematic order - aluminium and anthracite (more colors on request)
- Including genuine red ®RasterPlan Screw made of polyamide
- "GS-Zeichen" certified Tool Holder System



Aluminium Colored:
Long-lasting due to multi-layered surface.

®RasterPlan



Tool Holder with oblique hook end

Dimensions		Color	
L	Ø	aluminium	anthracitegrey
50	6	4040.00.0101	4040.00.0108
100	6	4040.00.0201	4040.00.0208
150	6	4040.00.0301	4040.00.0308
200	6	4040.00.0401	4040.00.0408



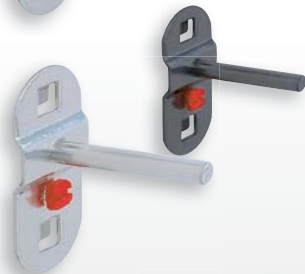
Tool Holder with vertical hook end

Dimensions		Color	
L	Ø	aluminium	anthracite
35	6	4040.00.0501	4040.00.0508
75	6	4040.00.0701	4040.00.0708
125	6	4040.00.0801	4040.00.0808



Tool Holder with straight spike, single

Dimensions		Color	
L	Ø	aluminium	anthracite
50	6	4040.00.1501	4040.00.1508
100	6	4040.00.1601	4040.00.1608
150	6	4040.00.1701	4040.00.1708



Oblique hook for spanner sockets and socket wrenches

Dimensions		Color	
L	Ø	aluminium	anthracite
14/40	6	4040.00.2101	4040.00.2108



Tool Clip, single, small base plate

Dimensions		Color	
Ø		aluminium	anthracite
6		4043.00.0101	4043.00.0108
10		4043.00.0201	4043.00.0208
13		4043.00.0301	4043.00.0308
16		4043.00.0401	4043.00.0408
19		4043.00.0501	4043.00.0508



Base plate for individual solutions

	Color	
	aluminium	anthracite
small	4044.00.0201	4044.00.0208
large	4044.00.0301	4044.00.0308



Dual Tool Holder with oblique hook end

Dimensions		Color	
L	Ø	aluminium	anthracite
50	6	4040.00.3501	4040.00.3508
75	6	4040.00.3601	4040.00.3608
150	6	4040.00.3701	4040.00.3708



Dual Tool Holder with vertical hook end

Dimensions		Color	
L	Ø	aluminium	anthracite
35	6	4040.00.1001	4040.00.1008
50	6	4040.00.1101	4040.00.1108
75	6	4040.00.1201	4040.00.1208
150	6	4040.00.1401	4040.00.1408



Dual Tool Holder with straight spike

Dimensions		Color	
L	Ø	aluminium	anthracite
50	6	4040.00.1801	4040.00.1808
100	6	4040.00.1901	4040.00.1908
150	6	4040.00.2001	4040.00.2008



Magnetic Holder

Dimensions		Color	
Ø		aluminium	anthracite
40		4044.00.0101	4044.00.0108



Double Tool Clip

Dimensions		Color	
Ø		aluminium	anthracite
6		4043.00.0601	4043.00.0608
10		4043.00.0701	4043.00.0708
13		4043.00.0801	4043.00.0808
16		4043.00.0901	4043.00.0908
19		4043.00.1001	4043.00.1008



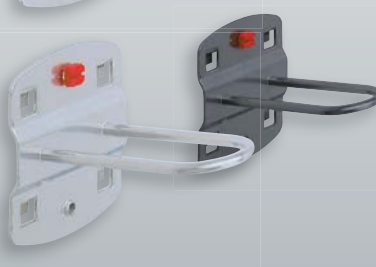
Tool Clip, single, large base plate

Dimensions		Color	
Ø		aluminium	anthracite
25		4043.00.1101	4043.00.1108
28		4043.00.1201	4043.00.1208
32		4043.00.1301	4043.00.1308



Rounded Holder

Dimensions		Color	
L	B	aluminium	anthracite
65	25	4040.00.2501	4040.00.2508



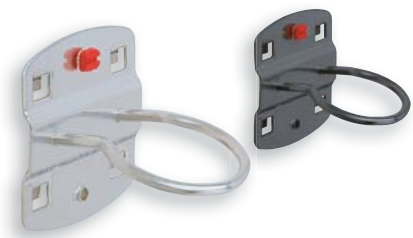


Tool storage

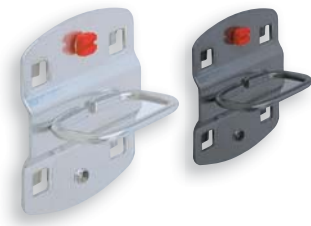
Cabinet systems

Storage of small parts

Ergonomics



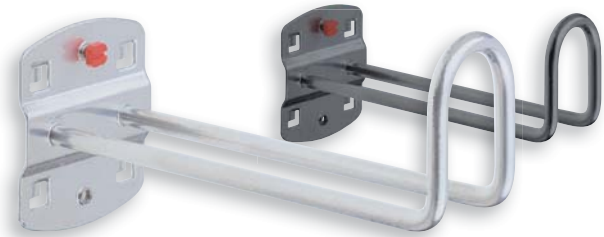
Machine Tool Holder			
Dimensions		Color	
inner Ø		aluminium	anthracite
40		4040.00.2601	4040.00.2608
60		4040.00.2701	4040.00.2708
80		4040.00.2801	4040.00.2808



Pliers Holder			
Dimensions		Color	
W	D	aluminium	anthracite
35	20	4040.00.2201	4040.00.2208
40	50	4040.00.3801	4040.00.3808
50	75	4040.00.3901	4040.00.3908
55	20	4040.00.2301	4040.00.2308
75	20	4040.00.2401	4040.00.2408



Pipe Bracket, also for hoses, cables, etc.			
Dimensions		Color	
W	Ø	aluminium	anthracite
35	60	4042.00.0101	4042.00.0108
35	100	4042.00.0201	4042.00.0208



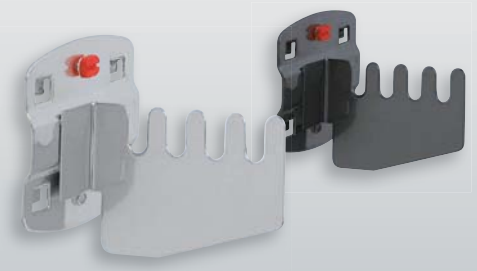
Cable Holder with hook end 50 mm tall			
Dimensions		Color	
L	W	aluminium	anthracite
100	37	4040.00.4001	4040.00.4008
150	37	4040.00.3101	4040.00.3108
200	37	4040.00.3201	4040.00.3208



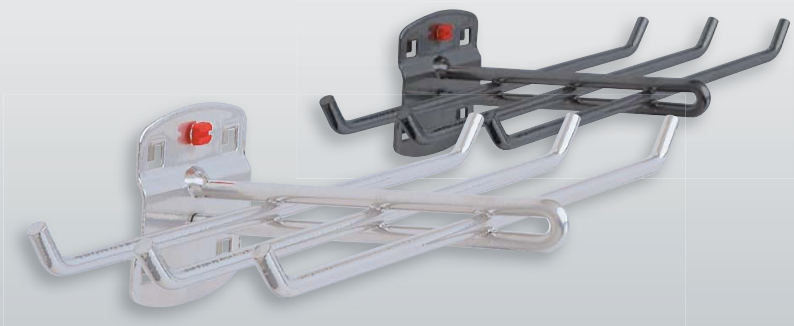
Tool Holder for self-service packaging			
Dimensions		Color	
L	B	aluminium	anthracite
125	30	4040.00.3301	4040.00.3308



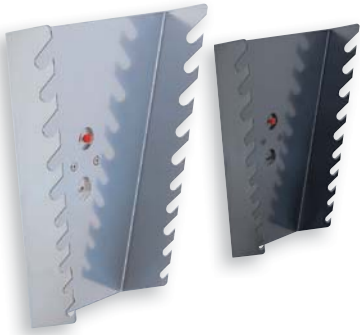
Tool Holder, three pronged			
Dimensions		Color	
L	W	aluminium	anthracite
150	45	4040.00.3001	4040.00.3008



Saw Holder (please order in pairs)			
		Color	
		aluminium	anthracite
for 4 sabs		4042.00.0301	4042.00.0308



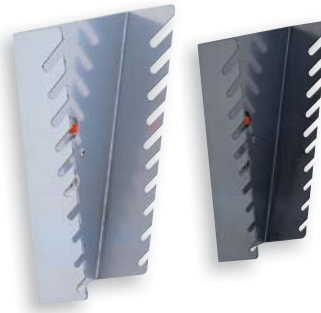
Tool Holder six pronged			
Dimensions		Color	
L	W	aluminium	anthracite
140	240	4040.00.2901	4040.00.2908



Ring spanner, vertical

H 255 x W 225/125 x D 50 mm

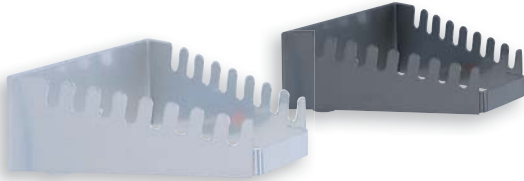
Color	aluminium	anthracite
for 10 wrenches	4042.00.2201	4042.00.2208



Spanner Holder, vertical

H 220 x W 145/75 x D 50 mm

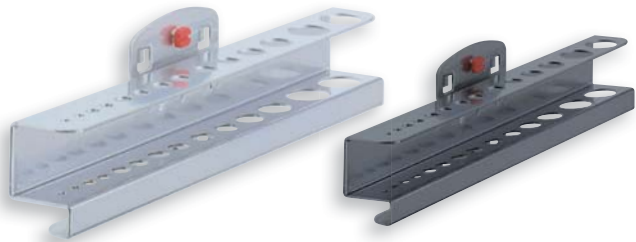
Color	aluminium	anthracite
for 10 wrenches	4042.00.2101	4042.00.2108



Spanner Holder, horizontal

H 50 x W 130/60 x D 150 mm

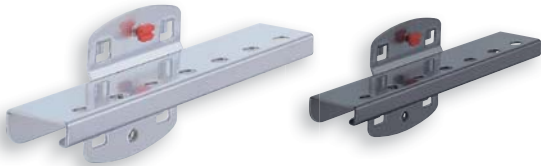
Color	aluminium	anthracite
for 8 wrenches	4042.00.2001	4042.00.2008



Allen key/drill Holder (var. Ø)

H 35 x W 200/390 x D 30 mm

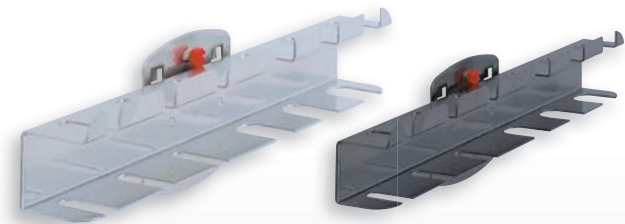
Color	aluminium	anthracite
for 14 pieces	4042.00.2801	4042.00.2808
for 28 pieces	4042.00.3301	4042.00.3308



Bit Holder

H 10 x W 150 x D 35 mm

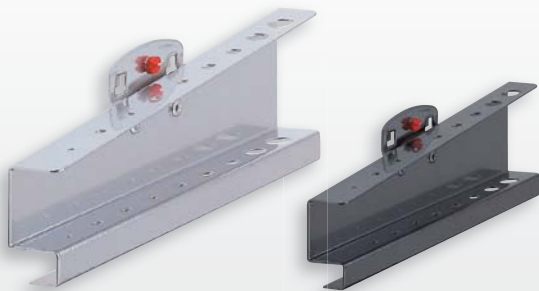
Color	aluminium	anthracite
for 7 bits	4042.00.2301	4042.00.2308



Screwdriver Holder

H 40 x W 200/390 x D 30 mm

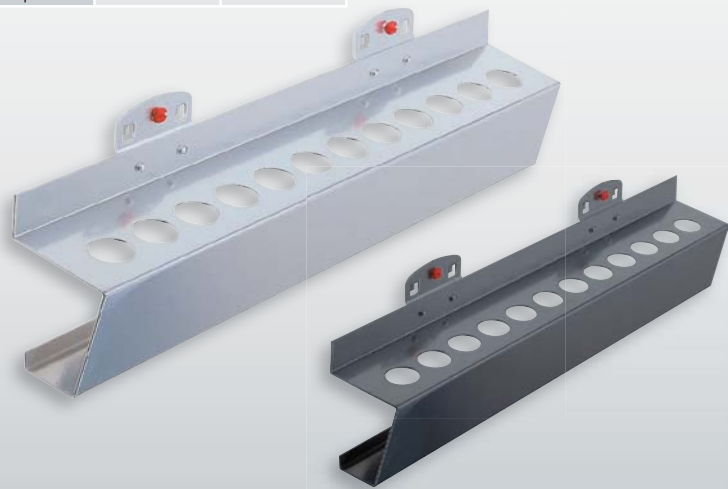
Color	aluminium	anthracite
for 6 pieces	4042.00.2601	4042.00.2608
for 12 pieces	4042.00.2701	4042.00.2708



Allen key Holder, Ø 2 - 12 mm

H 50/70 x W 200 x D 25 mm

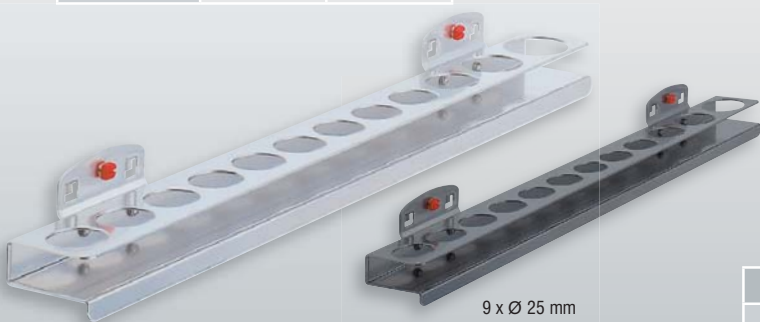
Color	aluminium	anthracite
for 9 keys	4042.00.2501	4042.00.2508



Tool Holder for MK-2 and MK-3

H 85 x W 395 x D 60 mm

Color	aluminium	anthracite
MK-2 (15 x Ø 17 mm)	4042.00.2901	4042.00.2908
MK-3 (12 x Ø 23 mm)	4042.00.3001	4042.00.3008



Socket Holder

H 30 x W 390 x D 45 mm

Color	aluminium	anthracite
for 12 sockets	4042.00.2401	4042.00.2408

9 x Ø 25 mm
1 x Ø 27 mm
1 x Ø 32 mm
1 x Ø 35 mm



Spray bottle Holder, single

W 76 Ø 52 mm

Color	aluminium	anthracite
	4042.00.3501	4042.00.3508

®RasterPlan



Pen Holder

W 112 Ø 17 mm (4x)

Color	aluminium	anthracite
	4042.00.3601	4042.00.3608



Can Holder for 1 can

W 100 / Ø 70 mm

Color	aluminium	anthracite
	4042.00.1101	4042.00.1108



Combination Holder for pens/spray bottle

W 176 Ø 17 mm (4x), Ø 52 mm (1x)

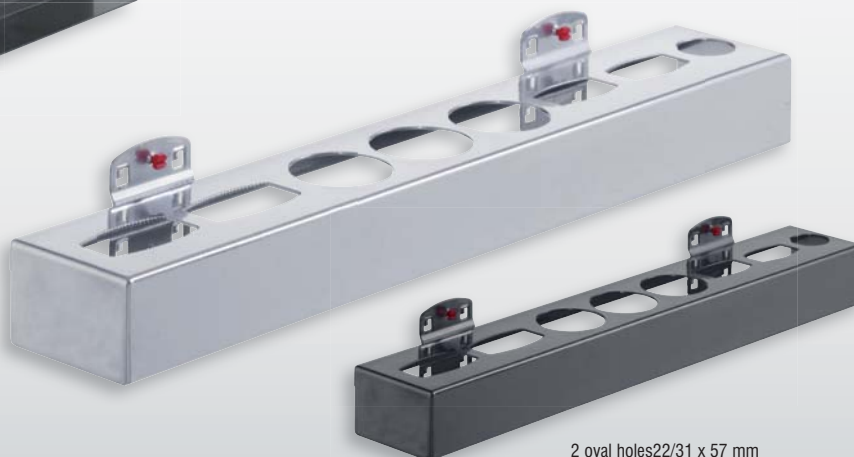
Color	aluminium	anthracite
	4042.00.3701	4042.00.3708



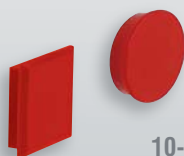
Can Holder, for 3 cans

W 300 mm / Ø 70 mm

Color	aluminium	anthracite
	4042.00.1201	4042.00.1208



2 oval holes 22/31 x 57 mm
3 round holes 51 mm
2 oval holes 20/27 x 46 mm
1 round holes 31 mm



10-tlg.

Magnets, for documents, 10 pieces

Color	red
set square	4044.00.1551
set round	4044.00.1651

Holder for cans and bottles

H 50 x W 500 x D 80 mm

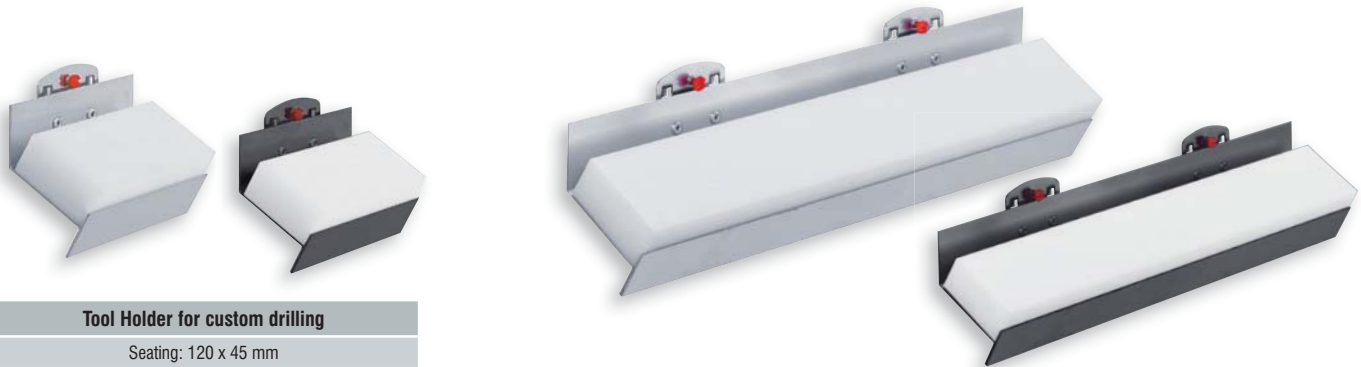
Color	aluminium	anthracite
for 8 pieces	4042.00.1301	4042.00.1308

Tool storage

Cabinet systems

Storage of small parts

Ergonomics



Tool Holder for custom drilling		
Seating: 120 x 45 mm		
Color	aluminium	anthracite
L 120 mm	4044.00.0401	4044.00.0408

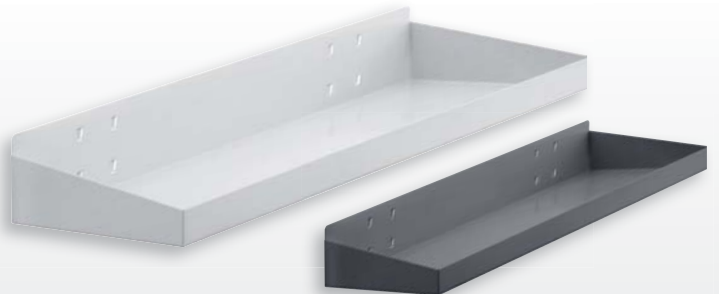
Tool Holder for custom drilling		
Seating: 390 x 45 mm		
Color	aluminium	anthracite
L 390 mm	4044.00.0501	4044.00.0508



Storage box, large		
Color	aluminium	anthracite
H 55 x W 320 x D 135 mm	4042.00.1601	4042.00.1608

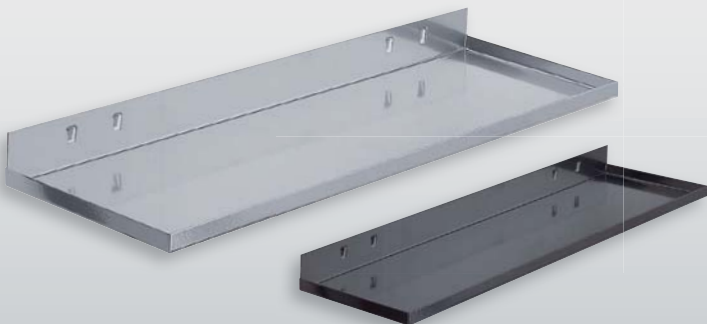


Tool Holder box with wooden board for custom drilling		
for drilling yourself	Seating: 320 x 135 x 55 mm	
Color	aluminium	anthracite
	4044.00.0601	4044.00.0608



Storage box, small		
Color	aluminium	anthracite
H 35 x W 250 x D 80 mm	4042.00.3401	4042.00.3408

Steel shelf with raised edge		
Color	light grey	anthracite
W 490 x D 243 mm	4042.00.1713	4042.00.1708



Shelf		
Color	aluminium	anthracite
W 350 x D 125 mm	4042.00.1801	4042.00.1808
W 445 x D 150 mm	4042.00.1901	4042.00.1908

Steel shelf		
Color	light grey	anthracite
W 435 x D 250 mm	4042.00.1513	4042.00.1508



Bin Holder for bin size 8		
L 550/990 x H 38 mm		
Color	aluminium	anthracite
for 5 bins	4042.00.0701	4042.00.0708
for 9 bins	4042.00.0801	4042.00.0808



Bin Holder for bin size 7		
L 550/990 x H 58 mm		
Color	aluminium	anthracite
for 5 bins	4042.00.0501	4042.00.0508
for 9 bins	4042.00.0601	4042.00.0608

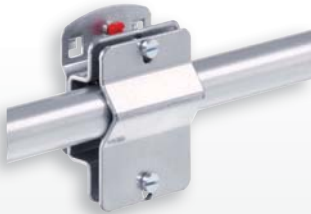


Single bin Holder, for bin sizes 7 and 8		
Color	aluminium	anthracite
for 1 bin	4042.00.0401	4042.00.0408

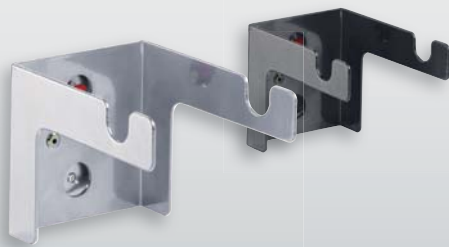
®RasterPlan



Combination Holder, 2 pieces		
L 150 x W 55 mm		
Color	aluminium	anthracite
	4042.00.0901	4042.00.0908



Clamping piece Holder for round piping	
W 55 mm / Ø as of 19 mm	
Color	aluminium
	4042.00.1001



Coil frame with axle Ø of up to 17 mm		
W max. 78 / Ø 170 mm		
Color	aluminium	anthracite
	4042.00.1401	4042.00.1408



Treble pipe Holder		
Color	aluminium	anthracite
H 400 x W 150 x D 85	4042.00.3801	4042.00.3808

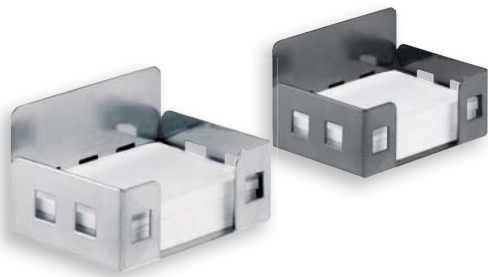


Tool storage

Cabinet systems

Storage of small parts

Ergonomics



Memo box for self-adhesive note paper blocks

W 75 x D 50 mm		
Color	aluminium	anthracite
	4044.00.1201	4044.00.1208

® RasterPlan self-adhesive note paper blocks

PU 10 items	4044.00.1365	
-------------	--------------	--



Flyer/Leaflet box

H 100 x W 100 x D 100 mm		
Color	aluminium	anthracite
	4044.00.1101	4044.00.1108



® RasterPlan



Pen box

Color	aluminium	anthracite
H 110 x W 63 x D 70 mm	4044.00.2001	4044.00.2008

File Holder

Color	aluminium	anthracite
H 310 x W 85 x D 220 mm	4044.00.2101	4044.00.2108



Document tray

Color	aluminium	anthracite
H 85 x W 225 x D 310 mm	4044.00.2201	4044.00.2208



Ø 250 mm



Waste bag Holder, clamping ring Ø 330 mm, 2 parts

Color	aluminium
Upper H 350 x W 305 x D 130 mm Lower H 305 x W 300 x D 120 mm	4044.00.1701



Axis diameter 20 mm with smooth cutter. Max diameter 220 mm

Paper Roll Holder, for roll widths of 300 mm

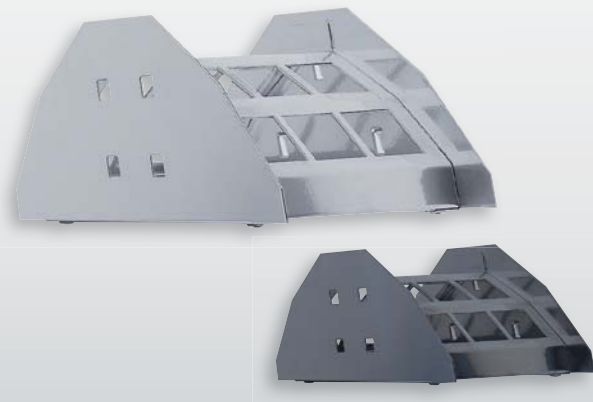
Color	light grey
H 310 x W 384 x D 220 mm	4044.00.0813



from 2 rolls W-120 mm, to max. 4 rolls W-55 mm

Sandpaper Dispence Holder

Color	aluminium	anthracite
H 265 x W 342 x D 290 mm	4042.00.3201	4042.00.3208



Hose Holder

Color	aluminium	anthracite
H 230 x D 125 mm	4042.00.3101	4042.00.3108



**Holder for roll paper
core-Ø min. 22 mm, max. roll width 295 mm**

Color	aluminium	anthracite
H 120 x W 355 x D 100 mm	4044.00.0901	4044.00.0908



Tool storage

Cabinet systems

Storage of small parts

Ergonomics



Leaflet Holder DIN A5		
H 210 x W 150 mm		
Color	light grey	anthracite
	4044.00.1013	4044.00.1008



Form Holder DIN A4		
H 310 x W 220 mm		
Color	light grey	anthracite
	4470.00.0113	4470.00.0108

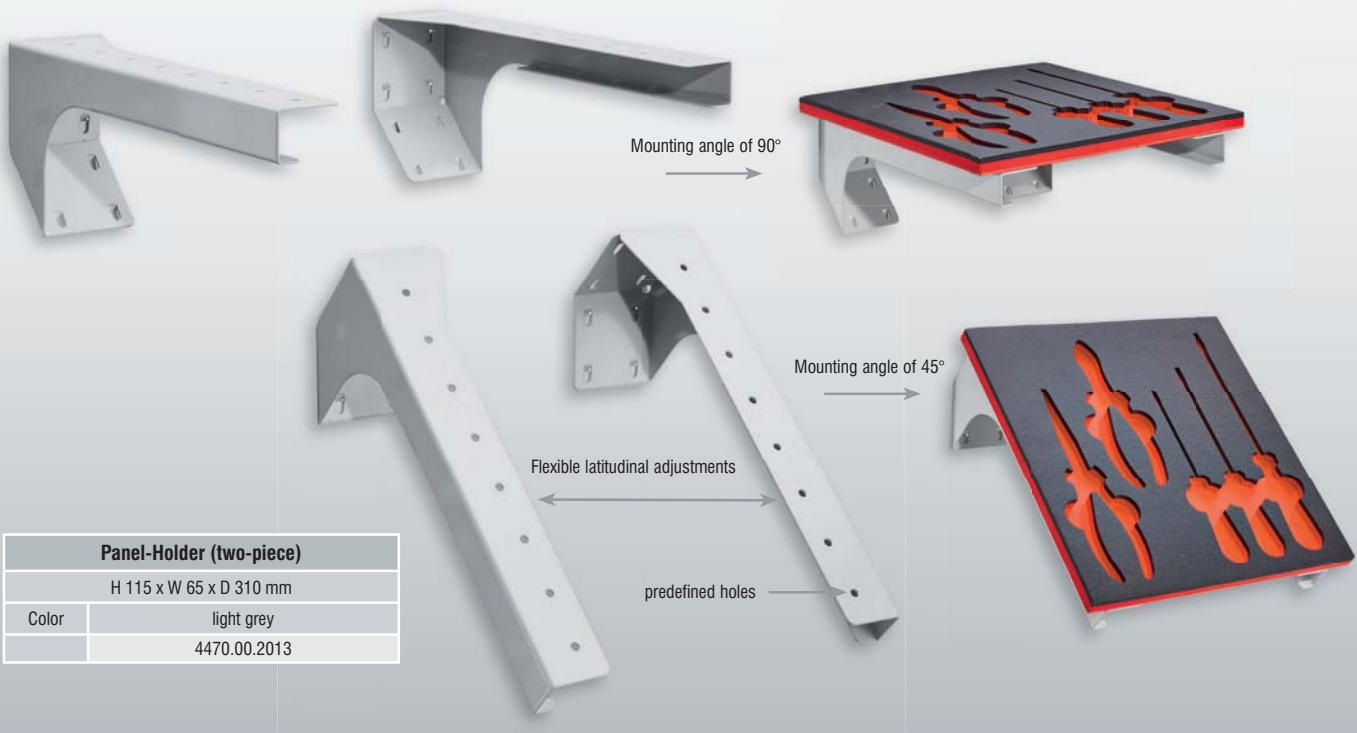
® RasterPlan



Catalogue Holder DIN A4		
H 310 x W 220 mm		
Color	light grey	anthracite
	4470.00.0313	4470.00.0308



Catalogue Holder DIN A3		
H 310 x W 440 mm		
Color	light grey	anthracite
	4470.00.0213	4470.00.0208



Panel-Holder (two-piece)		
H 115 x W 65 x D 310 mm		
Color	light grey	
	4470.00.2013	



10-pcs.

12-pcs.

RasterPlan Tool Holder Set 10 pieces

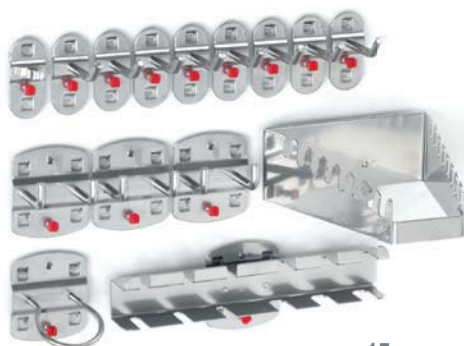
- 7 Tool Holder with oblique hook end
- 2 Dual Tool Holder with vertical hook end
- 1 Tool Clip

aluminium	4027.01.0001
anthracite	4027.01.0008

RasterPlan Tool Holder Set 12 pieces

- 4 Tool Holder with vertical hook end
- 3 Dual Tool Holder with vertical hook ends
- 1 Pliers Holder
- 1 Machine Tool Holder
- 3 Tool Holder with oblique hook end

aluminium	4027.02.0001
anthracite	4027.02.0008



15-pcs.



17-pcs.

RasterPlan Tool Holder Set 15 pieces

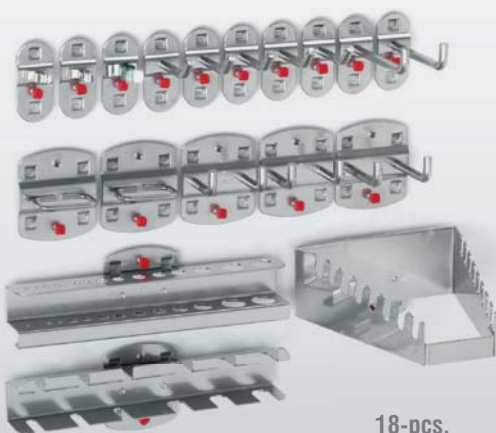
- 8 Tool Holder with oblique hook end
- 3 D. Tool Holder w. vertical hook end
- 1 Tool Clip
- 1 Screwdriver Holder
- 1 Spanner Holder
- 1 Machine Tool Holder

aluminium	4027.03.0001
anthracite	4027.03.0008

RasterPlan Tool Holder Set 17 pieces

- 8 Tool Holder with oblique hook end
- 4 Dual Tool Holder
- 5 Tool Clip

aluminium	4027.24.0001
anthracite	4027.24.0008



18-pcs.



20-pcs.

RasterPlan Tool Holder Set 18 pieces

- 5 Tool Holder with oblique hook end
- 2 Tool Holder with vertical hook end
- 3 D. Tool Holder w. vertical hook end
- 3 Tool Clip
- 2 Pliers Holder
- 1 Allen key/drill Holder
- 1 Spanner Holder
- 1 Screwdriver Holder

aluminium	4027.04.0001
anthracite	4027.04.0008

RasterPlan Tool Holder Set 20 pieces

- 5 Tool Holder with vertical hook end
- 5 D. Tool Holder w. vertical hook end
- 5 Tool Clip
- 2 Saw Holder
- 1 Bit Holder
- 1 Allen key/drill Holder
- 1 Spanner Holder, vertical

aluminium	4027.25.0001
anthracite	4027.25.0008



Tool storage

Cabinet systems

Storage of small parts

Ergonomics

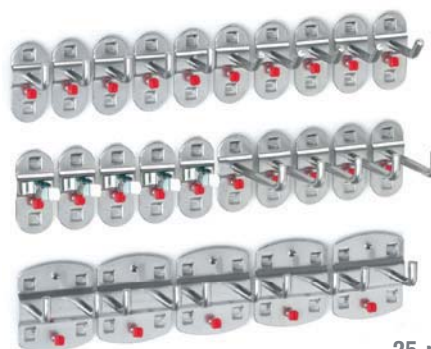


21-pcs.

RasterPlan Tool Holder Set 21 pieces

- 4 Tool Holder with vertical hook end
- 4 D. Tool Holder w. vertical hook end
- 3 Tool Clip
- 3 Double Tool Clip
- 2 Machine Tool Holder
- 1 Tool Holder, six prongs
- 2 Pipe bracket Holder
- 1 Spanner Holder
- 1 Storage box, small

aluminium	4027.26.0001
anthracite	4027.26.0008



25-pcs.

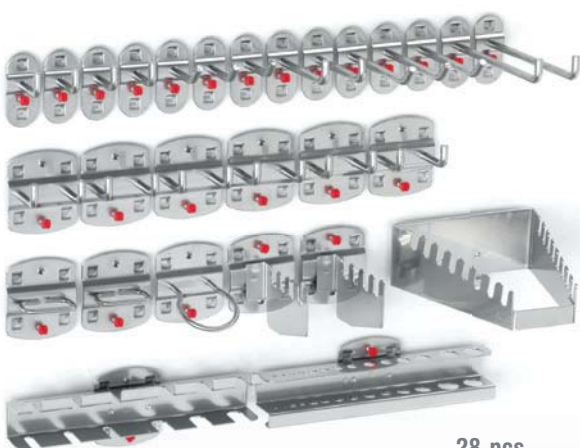
RasterPlan Tool Holder Set 25 pieces

- 5 Tool Holder with oblique hook end
- 10 Tool Holder with vertical hook end
- 5 Dual Tool Holder w. vert. hook end
- 5 Tool Clip

aluminium	4027.27.0001
anthracite	4027.27.0008



®RasterPlan



28-pcs.

RasterPlan Tool Holder Set 28 pieces

- 6 Tool Holder with oblique hook end
- 8 Tool Holder with vertical hook end
- 6 D. Tool Holder w. vertical hook end
- 2 Pliers Holder
- 1 Machine Tool Holder
- 1 Spanner Holder
- 1 Screwdriver Holder
- 1 Allen key/drill Holder
- 2 Saw Holder

aluminium	4027.05.0001
anthracite	4027.05.0008

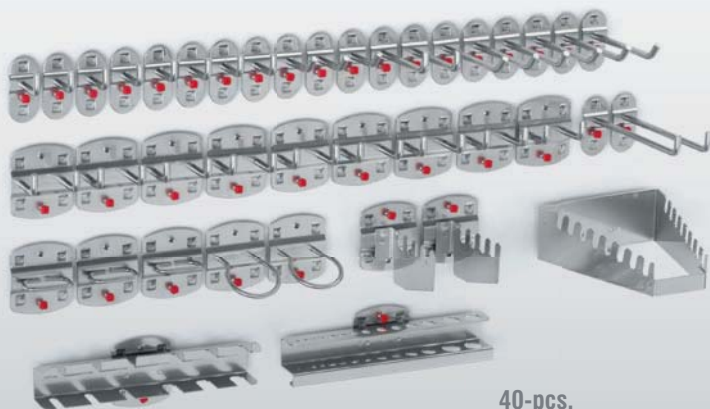


35-pcs.

RasterPlan Tool Holder Set 35 pieces

- 5 Tool Holder with oblique hook end
- 5 Tool Holder with vertical hook end
- 10 Dual Tool Holder w. vert. hook end
- 15 Tool Clip

aluminium	4027.28.0001
anthracite	4027.28.0008

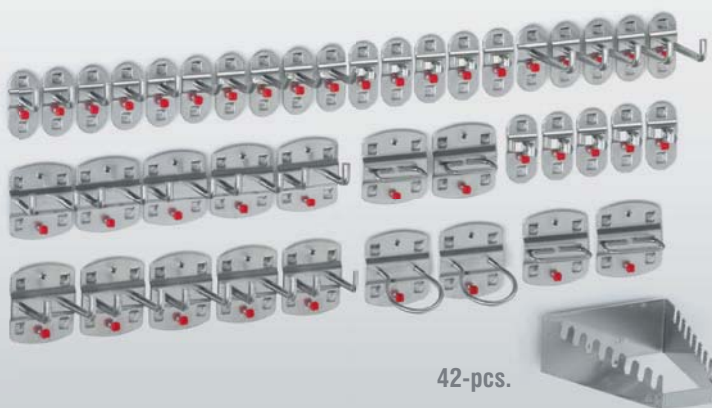


40-pcs.

RasterPlan Tool Holder Set 40 pieces

- 9 Tool Holder with oblique hook end
- 12 Tool Holder with vertical hook end
- 9 Dual Tool Holder w. vert. hook end
- 3 Pliers Holder
- 2 Machine Tool Holder
- 1 Spanner Holder
- 1 Screwdriver Holder
- 1 Allen key/drill Holder
- 2 Saw Holder

aluminium	4027.06.0001
anthracite	4027.06.0008



42-pcs.

RasterPlan Tool Holder Set 42 pieces

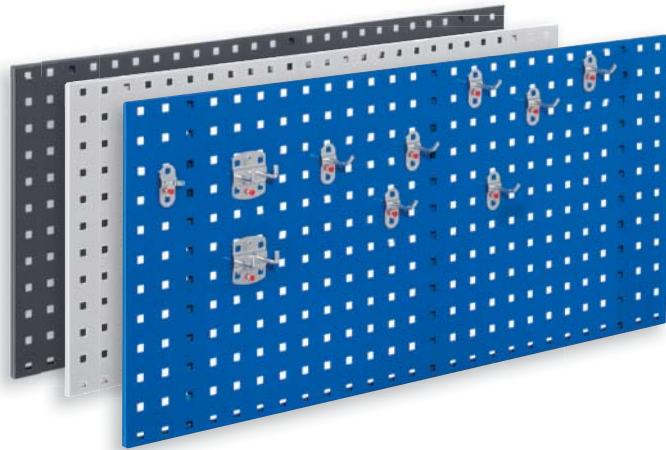
- 5 Tool Holder with oblique hook end
- 10 Tool Holder with vertical hook end
- 10 Dual Tool Holder w. vert. hook end
- 10 Tool Clip
- 2 Machine Tool Holder
- 4 Pliers Holder
- 1 Spanner Holder

aluminium	4027.29.0001
anthracite	4027.29.0008

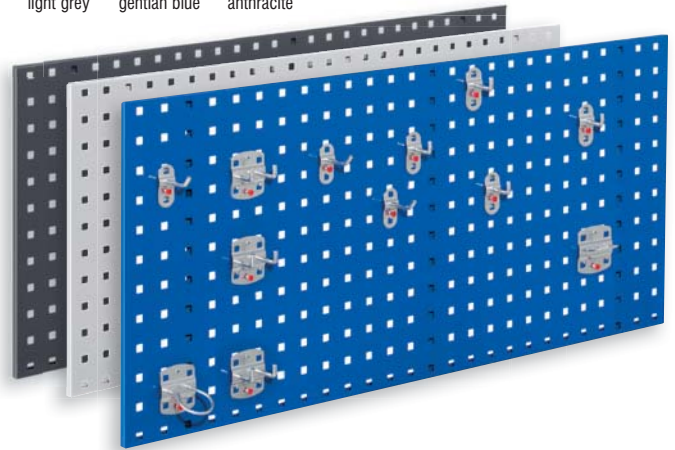


®RasterPlan

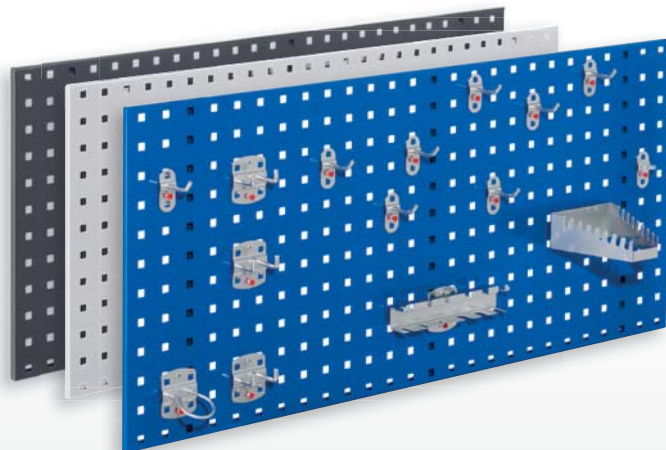
available in three colors



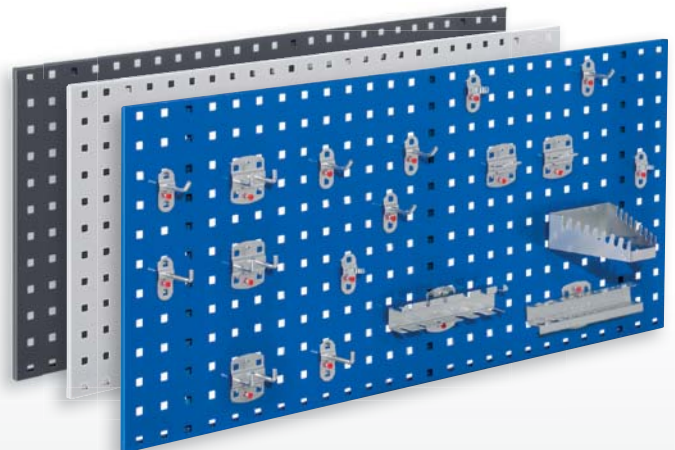
®RasterPlan Starter Set 5			
Equipped with:	1 x Tool Board H 450 x W 1000 mm 1 x RasterPlan Tool Holder Set 10 pieces		
Board color	light grey	gentian blue	anthracite
	4024.05.1013	4024.05.1021	4024.05.1008



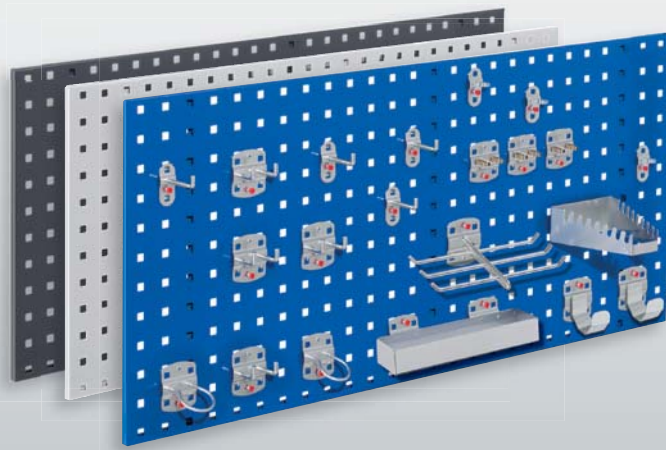
®RasterPlan Starter Set 2			
Equipped with:	1 x Tool Board H 450 x W 1000 mm 1 x RasterPlan Tool Holder Set 12 pieces		
Board color	light grey	gentian blue	anthracite
	4024.06.1013	4024.06.1021	4024.06.1008



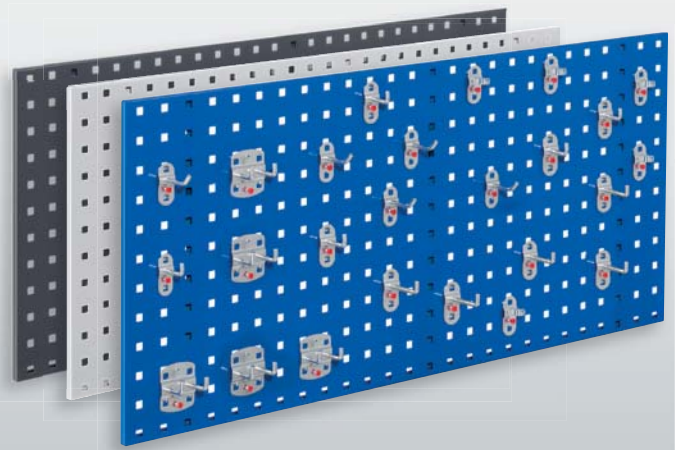
®RasterPlan Starter Set 1			
Equipped with:	1 x Tool Board H 450 x W 1000 mm 1 x RasterPlan Tool Holder Set 15 pieces		
Board color	light grey	gentian blue	anthracite
	4024.01.1013	4024.01.1021	4024.01.1008



®RasterPlan Starter Set 6			
Equipped with:	1 x Tool Board H 450 x W 1000 mm 1 x RasterPlan Tool Holder Set 18 pieces		
Board color	light grey	gentian blue	anthracite
	4024.02.1013	4024.02.1021	4024.02.1008



®RasterPlan Starter Set 7			
Equipped with:	1 x Tool Board H 450 x W 1000 mm 1 x RasterPlan Tool Holder Set 21 pieces		
Board color	light grey	gentian blue	anthracite
	4024.07.1013	4024.07.1021	4024.07.1008



®RasterPlan Starter Set 8			
Equipped with:	1 x Tool Board H 450 x W 1000 mm 1 x RasterPlan Tool Holder Set 25 pieces		
Board color	light grey	gentian blue	anthracite
	4024.08.1013	4024.08.1021	4024.08.1008



Tool storage

Cabinet systems

Storage of small parts

Ergonomics

The new product in the RasterPlan collection represents an ideal solution for handling tasks in warehouses, offices, reception areas, conference and social facilities, archives and many other areas.

Discover for yourself the new versatility of the LogoChart® lends to your workplace. The whiteboard with washable field offers an ideal surface on which to create quick diagrams, notes and other visual aids. Frequently used tools and other work needs can be housed using the Tool Holders of the tool board.

Whatever you want to organise, our comprehensive range of RasterPlan accessories offer multiple solutions.

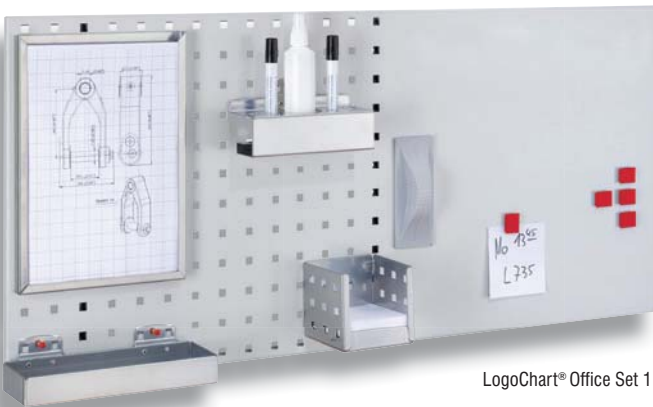
The LogoChart® enhances the functional RasterPlan Tool Board range as planning aid for warehouses and offices.

Details

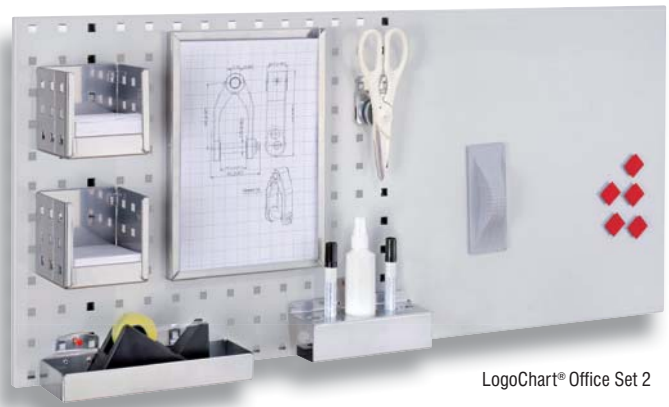
- Multi-functional and flexible in planning
- Impact and scratch resistant plastic coating in light grey
- Can be used both vertically and horizontally
- 1000 x 450 mm, light grey (RAL 7035)
- Accessories optionally aluminium or anthracite
- Writing surface can be wiped clean with no traces (Please only use non-permanent markers)
- Magnetic
- Additional Tool Holders available in aluminium color and anthracite



LogoChart®



LogoChart® Office Set 1



LogoChart® Office Set 2

LogoChart® Office Set 1

1 LogoChart®, RAL 7035	5 Magnets
1 Form Holder	1 Wiper (magnetic)
1 Leaflet box	1 Cleaning spray
1 Storage box	2 Non-permanent marker pens (black)
1 Combination pen Holder	
aluminium	4604.01.1013
anthracite	4604.01.1024

LogoChart® Office Set 2

1 LogoChart®, RAL 7035	1 Combination pen Holder
1 Form Holder	5 Magnets
2 Leaflet boxes	1 Wiper (magnetic)
1 Magnetic Holder	1 Cleaning spray
1 Storage box	2 Non-permanent marker pens (black)
aluminium	4604.02.1013
anthracite	4604.02.1024



LogoChart® Office Set 3



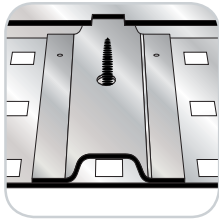
LogoChart® Office Set 4

LogoChart® Office Set 3

1 LogoChart®, RAL 7035	5 Magnets
4 Leaflet boxes	1 Wiper (magnetic)
1 Storage box	1 Cleaning spray
1 Combination pen Holder	2 Non-permanent marker pens (black)
aluminium	4604.03.1013
anthracite	4604.03.1024

LogoChart® Office Set 4

1 LogoChart®, RAL 7035	5 Magnets
2 Form Holder	1 Wiper (magnetic)
1 Magnetic Holder	1 Cleaning spray
1 Storage box	2 Non-permanent marker pens (black)
1 Combination pen Holder	
aluminium	4604.04.1013
anthracite	4604.04.1024



Construction of the backside
LogoChart® are stiffened by special designed joists, both sides welded on for highest load.



LogoChart®
without equipment
4604.00.1013



LogoChart® Workshop Set 1



LogoChart® Workshop Set 2

LogoChart® Workshop Set 1	
1 LogoChart®, RAL 7035	1 Storage box
2 Dual Tool Holder	5 Magnets
2 Tool Holder w. oblique hook end	1 Wiper (magnetic)
2 Tool Clips	1 Cleaning spray
1 Magnetic Holder	2 Non-permanent marker pens (black)
1 Combination pen Holder	
aluminium	4604.31.1013
anthracite	4604.31.1024

LogoChart® Workshop Set 2	
1 LogoChart®, RAL 7035	1 Leaflet box
2 Dual Tool Holder	5 Magnets
2 Tool Holder w. oblique hook end	1 Wiper (magnetic)
2 Tool Clips	1 Cleaning spray
1 Combination pen Holder	2 Non-permanent marker pens (black)
aluminium	4604.32.1013
anthracite	4604.32.1024



LogoChart® Workshop Set 3



LogoChart® Workshop Set 4

LogoChart® Workshop Set 3	
1 LogoChart®, RAL 7035	1 Combination pen Holder
1 Dual Tool Holder	5 Magnets
2 Tool Holder w. oblique hook end	1 Wiper (magnetic)
2 Tool Clips	1 Cleaning spray
1 Roll Holder	2 Non-permanent marker pens (black)
aluminium	4604.33.1013
anthracite	4604.33.1024

LogoChart® Workshop Set 4	
1 LogoChart®, RAL 7035	1 Leaflet box
1 Dual Tool Holder	5 Magnets
2 Tool Holder w. oblique hook end	1 Wiper (magnetic)
2 Tool Clips	1 Cleaning spray
1 Combination pen Holder	2 Non-permanent marker pens (black)
aluminium	4604.34.1013
anthracite	4604.34.1024



Tool storage

Cabinet systems

Storage of small parts

Ergonomics

**Exclusively available in the UK from
Systems Design
Tel + 44 (0)1892 256007
info@systemsdesignuk.com
www.systemsdesignuk.com**

